

**Head Office:**  
Dixon Kelley Estate Agents  
1 Penn Court  
Station Road, West Moors  
Dorset. BH22 0JJ

# DORSET PARK HOMES

**DRAFT**

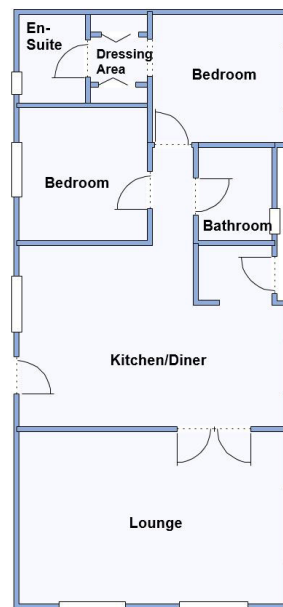
[www.dorsetparkhomes.com](http://www.dorsetparkhomes.com)

**Telephone: 01202 877511**

**9 Gladelands Park, Ringwood Road, Ferndown, Dorset. BH22 9BW**



**Luxury New 'Omar' Park Home close to amenities**



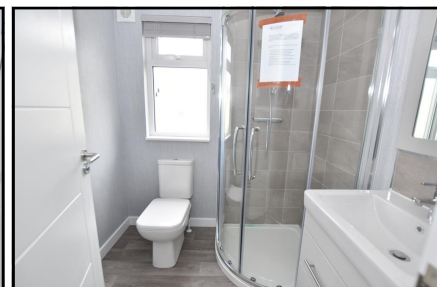
This drawing has been prepared for diagrammatic purpose only. Not to scale

## 2 Bedroom Park Home approx 41' x 19'

Accommodation & approximate room dimensions:

- Omar 'Image' 2023
- Stylish Interior & Fully Furnished
- Kitchen/Diner: approx 18'1" x 12'3". Range of floor and wall cupboards. Integrated fridge/freezer, dishwasher & washing machine. Built-in oven, hob & cooker hood. Cupboard housing combination gas boiler. Vaulted ceiling with LED lighting.
- Lounge: approx 18'1" x 11'9". Vaulted ceiling & feature fireplace.
- Bedroom 1: approx 12' x 8'8" including Dressing Area with built-in wardrobes.
- Luxury En-Suite Shower Room
- Bedroom 2: approx 9' x 8'7". Built-in wardrobe.
- Bathroom: Panelled bath with thermostatic shower unit & screen fitted. Wash basin & WC.
- Gas Central Heating
- PVCu Double-Glazing
- Garden: Laid to lawn. Concrete Shed.
- Parking on Plot—Block Driveway
- Age Restriction 50+ No Pets Allowed
- Well Maintained Residential Park in convenient location close to local amenities

## Stylish Interior—Fully Furnished



**Pitch Fee: approx £254 per month**

**Subject to Annual Review**

**Council Tax Band: 'A'**

**Tenure: 1983 Mobile Homes Act Agreement**

**Price £235,000**

**VIEWING STRICTLY BY APPOINTMENT WITH THE VENDOR'S AGENT Dorset Park Homes 01202 877511**

**IMPORTANT NOTE:** These particulars are believed to be correct but their accuracy is not guaranteed. They do not form part of any contract. Nothing in these particulars shall be deemed to be a statement that the property is in good structural condition or otherwise, nor that any of the services, appliances, equipment or facilities are in good working order or have been tested. Purchasers should satisfy themselves on such matters prior to purchase Ref.W04594

*The recommended specialist in Park Home sales*  
Proprietor: Simon Dixon

